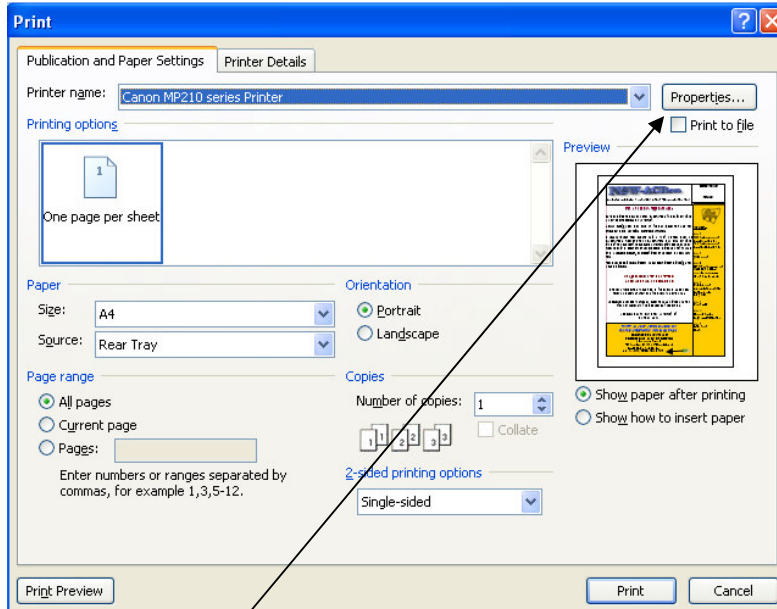
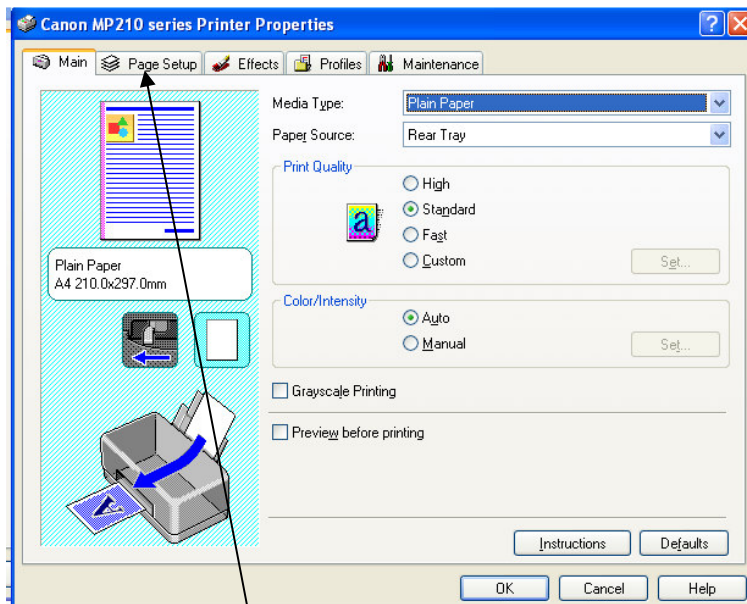


PRINTING OUT THE NSWACTION

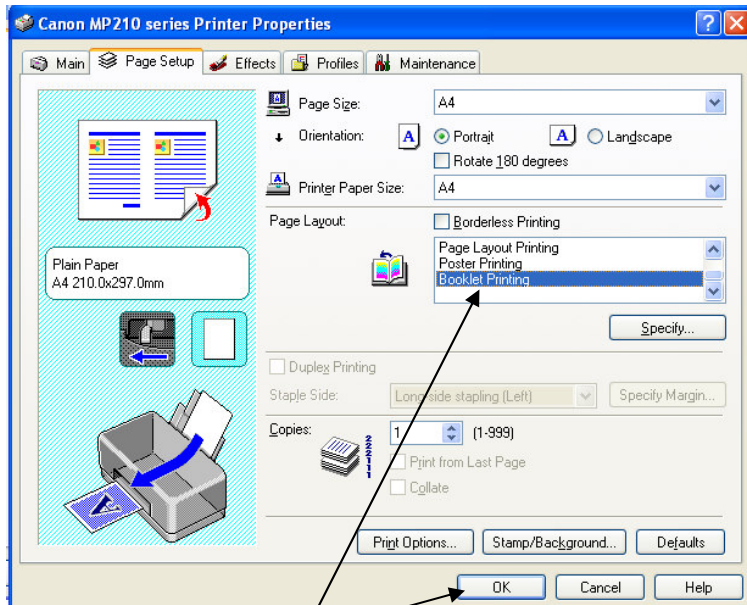
PRINT



SELECT properties



SELECT: Page Set Up



SELECT: Booklet Printing

Then OK – YOU WILL PRINT OUT ONE SIDE AND THEN BE ASKED TO REPLACE THE PAPER IN THE FEEDER FOR PRINTING THE OTHER SIDE. FOLD DOCUMENT IN HALF AND THERE YOU ARE. DONE.

I ONLY HAVE EXPERIENCE WITH CANON PRINTERS BUT I AM SURE MOST PRINTERS WOULD HAVE THIS OPTION AVAILABLE.

It is necessary for me to create the document in A4 size using a font in 16 pitch so that when I reduce it to booklet printing it will be readable. If you just hit the print button before doing the special print set up you will end up with a 'blazing in your face' edition of the NSWAction. Oops!

Contact me if you have any printing issue and I will try to help you.

Kay Radford - Editor